



Specification

| | | |
|----------------------------|--|----------------------------------|
| Model | EBLC-SH4BLM | EBLC-SH3BLH |
| Image Pick-up Device | SONY 1/4" CCD | SONY 1/3" CCD (High Resolution) |
| Effective Picture Elements | NTSC:510*492, PAL: 500*582 (H*V) | NTSC:768*494, PAL: 752*582 (H*V) |
| Horizontal Resolution | 380 TV lines | 480 TV lines |
| Minimum Illumination | 0.5 LUX @ F2.0 | 0.5 LUX @ F2.0 |
| S/N Ratio | More than 48 dB | More than 52 dB |
| Auto Electronic Shutter | NTSC:1/60s~1/100,000s, PAL:1/50s~1/110,000s. | |
| Auto Gain Control | Automatically | |
| Auto White Balance | Color Temperature: 2500K~9500K. | |
| Gama Characteristic | 0.45 | |
| Synchronous System | Internal, Negative sync. | |
| Video Output | 1 Vp-p Composite Video / 75 Ohms. | |
| Power Supply | 12V DC ±V | |
| Power Consumption | 110 mA | 80 mA 100 mA |
| Lens Furnished | Board lens f 3.6 mm / F2.0 (optional: f 2.5 / 4.3 / 6.0 / 8.0 / 12 mm) | |
| Operating Temp. | -10°C to 50°C(14°F to 122°F) | |

Features:

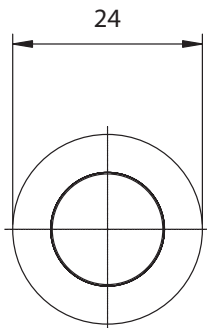
- " Color Camera PCB Module with SONY 1/3" or 1/4" Super HAD CCD sensor.
- " Employs Digital Signal Processor (DSP) IC for image control.
- " Pixel number :
NTSC=270,000 / 410,000 (High Resolution)
PAL=320,000 / 470,000 (High Resolution)
- " High sensitivity, low smear, excellent anti-blooming, and high S/N ratio.
- " Supports functions: Auto Electronic Shutter (AES), Auto White Balance (AWB), Back Light Compensation (BLC), Flicker Less (FL).
- " Built-in anti-aliasing and IR-cut optical filter.



Packing List

| No. | Description | Component NO. | TY |
|-----|-------------------------------|----------------------------------|----|
| 1. | Day & Night Color Dome Camera | SS332M NVDS -SH432M SH332H | 1 |
| 2. | Screw & Anchor | Screw-Anchor | 4 |
| 3. | Manual | NVDS Manual | 1 |

Rear View



Dimension(unit:mm)

